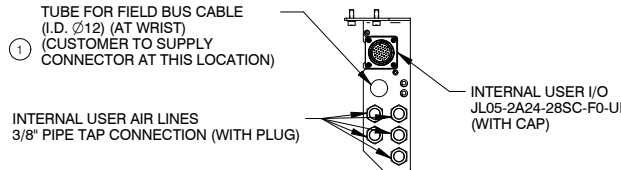
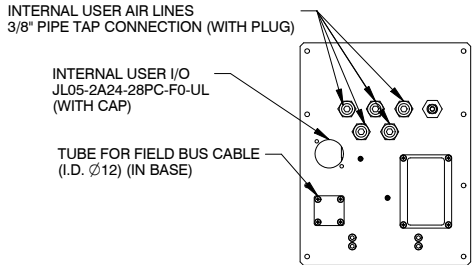
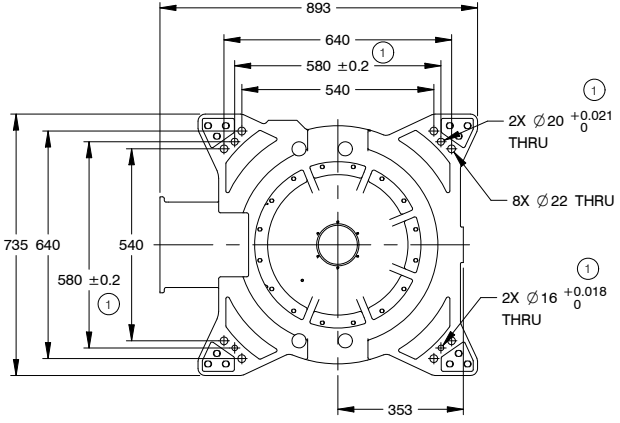
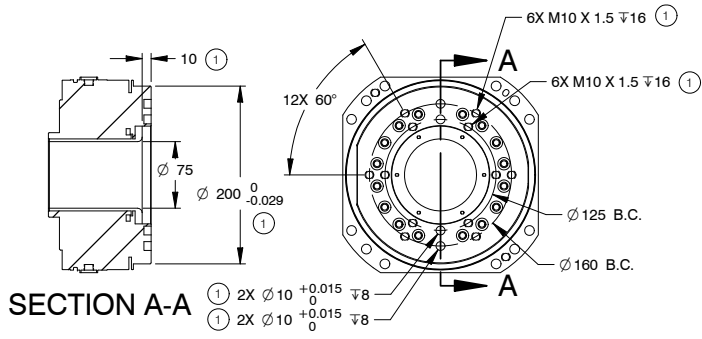
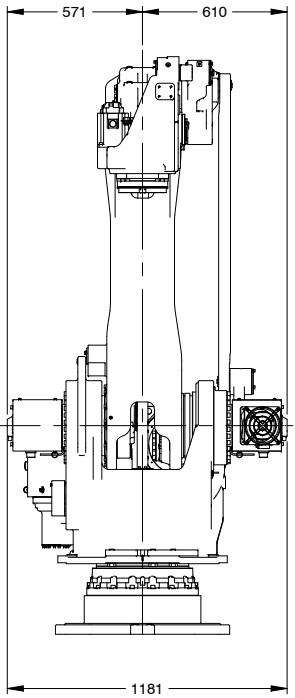
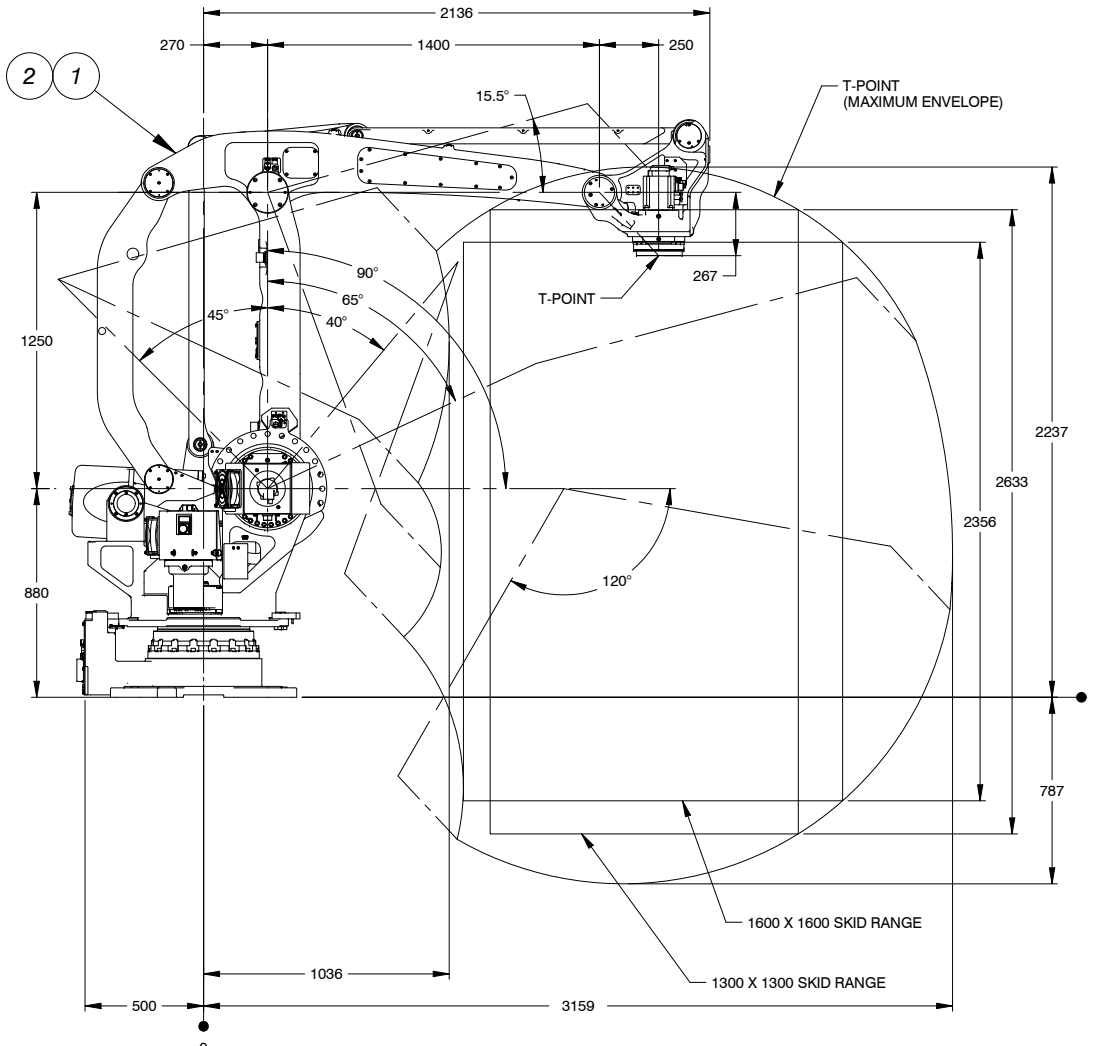
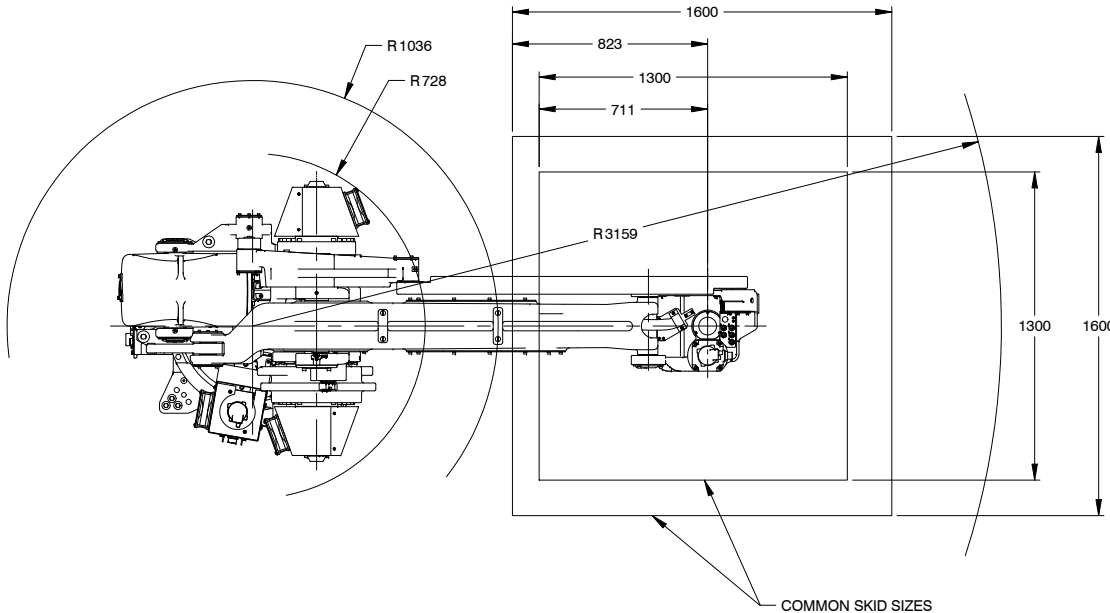


CONFIDENTIAL: THIS DRAWING CONTAINS A PROPRIETARY DESIGN ORIGINATED BY YASKAWA AMERICA, INC. MOTOMAN ROBOTICS DIVISION (YASKAWA MOTOMAN). NEITHER IT NOR THE INFORMATION APPEARING HEREON SHALL BE DISCLOSED, USED, OR DUPLICATED FOR ANY PURPOSE UNLESS SPECIFICALLY AUTHORIZED BY MOTOMAN ROBOTICS. THIS DRAWING IS THE PROPERTY OF MOTOMAN ROBOTICS AND SHALL BE RETURNED TO IT UPON REQUEST. ALL PATENT RIGHTS RELATING HERETO ARE SPECIFICALLY RESERVED.



MOTOMAN - PL190-100			
CONFIGURATION		ARTICULATED ROBOT	
DEGREE OF FREEDOM		4	
PAYLOAD	WRIST	100 kg	
REPEATABILITY	REPEATABILITY	1	0.05 mm
RANGE OF MOTION	S-AXIS	-180°/+180°	
	L-AXIS	-45°/+90°	
	U-AXIS	-120°/+15.5°	
	T-AXIS	-360°/+360°	
MAX. SPEED	S-AXIS	2.44 rad/s, 140°/s	
	L-AXIS	2.53 rad/s, 145°/s	
	U-AXIS	2.53 rad/s, 145°/s	
	T-AXIS	7.33 rad/s, 420°/s	
ALLOWABLE INERTIA	T-AXIS	47 GD <sup>2</sup> /4 (kg-m <sup>2</sup> )	
APPROX. ROBOT MASS		1	1680 kg
PROTECTED STRUCTURE		BODY: IP54 WRIST: IP67	
MOUNTING METHOD		FLOOR-MOUNTED	
AMBIENT CONDITIONS	TEMPERATURE	0 TO +45°C	
	HUMIDITY	20 TO 80% RH (NON-CONDENSING)	
	VIBRATION	4.9 m/s <sup>2</sup> (0.5 G) OR LESS	
	ALTITUDE	1000 m OR LESS	
	OTHERS	FREE FROM EXPLOSIVE OR CORROSIVE GAS AND LIQUID. FREE FROM DUST, SOOT, OIL, OR WATER. TO BE NO MATERIAL TO INFLUENCE THE LIP OF OIL SEAL MADE OF BUTADIENE ACRYLONITRILE (NBR). FREE FROM ELECTRICAL NOISE. FREE FROM STRONG MAGNETIC FIELDS.	
POWER REQUIREMENTS		1	9.5 KVA
CONTROLLER		YRC1000	

- NOTES:
1. REPEATABILITY IS CONFORMED TO ISO 9283.
  2. THE MANIPULATOR IS IN THE HOME POSITION.

ITEM	QTY	P/N	DESCRIPTION
2	1	191870-1	CONVERSION KIT, PL190 TO PL190-100
1	1	185806-1	ROBOT, PL190, YRC1000, HDLG, BLUE, W/O CABLES

PROJECTION				DESIGNED				DRAWN				CHECKED			
KJV				KJV				BJG				BDJ			
APPROVAL 1				APPROVAL 2				SCALE (UNLESS OTHERWISE NOTED)				1:15			
MATERIAL				FINISH				DWG SIZE				A1			
JIS TOLERANCES				MASS				DEPT.				PSG			
UNLESS OTHERWISE SPECIFIED, DIMENSIONS ARE IN MM. TOLERANCES TO THE LEFT APPLY EXCEPT FOR VENDOR DESIGNED PARTS AND ITEMS PRODUCED TO RECOGNIZED STANDARDS. DIMENSIONS AND TOLERANCES PER JIS B 0403-1991 (ISO 2768-1:1998).				FILE NAME				192544-1.dft							
OVER				TO				±							
6				30				0.1							
30				120				0.3							
120				400				0.5							
400				1000				0.8							
1000				2000				1.2							



TITLE		ROBOT ARM, PL190-100, YRC1000, HDLG, BLUE, W/O CABLES	
YAI DRAWING NO. YEC SOURCE CONTROL	192544-1	SHEET 1 OF 1	