

Vision System

Camera & Software MotoSight2D



The new MotoSight2D Vision combines leading vision technology with leading robotic technology. The MotoSight2D product range is based on compact 2D cameras in 3 different performance classes. In addition to simple data exchange, programming of the camera from the teach pendant of the robot is also possible.

The tool set of the camera covers a wide range of camera applications, from Pick&Place applications to quality monitoring tasks. Of particular note here is the patented Patmax algorithm, the benefits of which are exploited to the full in typical Pick&Place applications.

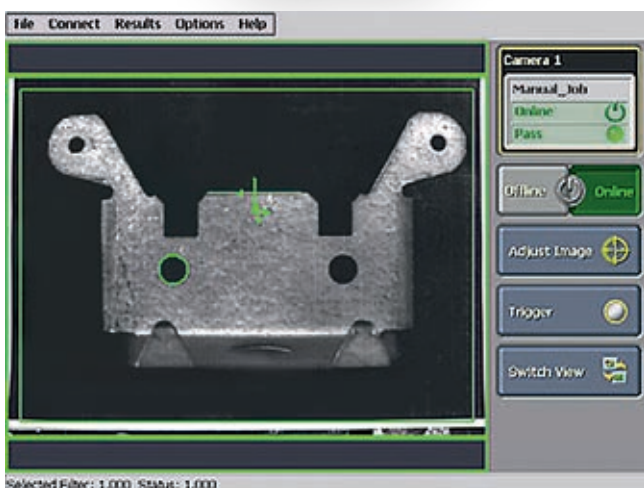
KEY BENEFITS

Camera:

- Direct communication with software MotoSight2D
- High speed and resolution
- Flexible mounting (on robot or free standing)
- Several equipment available

Software:

- Monitoring of up to 4 cameras
- Display camera image (live) on robot teach pendant
- Simple assignment of vision results to robot variables
- Storage of current jobs and images



Equipment (Base Camera Kit)

Scope of supply:

- Camera (MS100, MS200, MS300)
- MotoSight2D Software

Other necessary components:

- Lens
- Ethernet and power cable

Features

Pendant features:

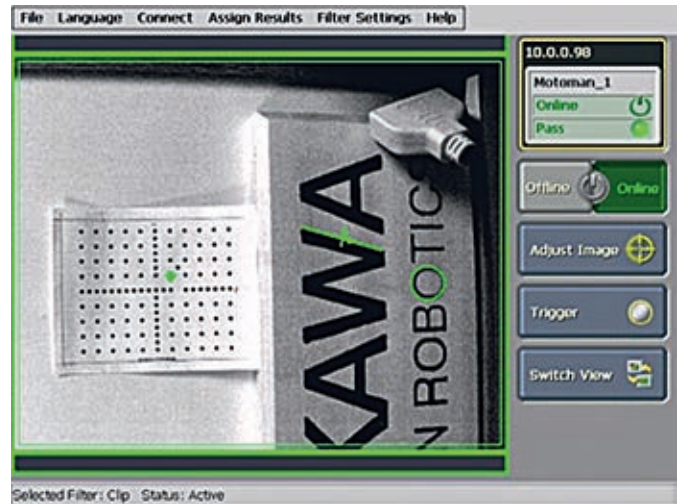
- Monitor and change on-line camera status
- Display pass/fail status
- Auto Display most recent camera image
- Display graphic overlays on captured image
- Calibrate camera using pendant
- Teaching of vision application

Communication:

- DX100, DX200 and FS100 controllers communicate directly with MotoSight2D camera over Ethernet

Vision features:

- Easy Builder and Spreadsheet
- Advanced option includes vision operator interface to view images from camera system
- High-resolution cameras available



Model	Technical data YASKAWA Cameras			
	Resolution	Processor speed	Frame/Second	Vision tools
MS100	800 x 600	1 x Base model	102	Limited Tool Set Pattern, Edge, Blob, Circle, Curve, Histogram, Geometry, Image Filters, Standard Calibration (9-Points)
MS200	800 x 600	3 x Base model	102	Full Tool Set Pattern, Edge, Blob, Circle, Curve, Histogram, Geometry, Image Filters, Standard Calibration (9-Points) PatMax (Geometric pattern matching technology), Advanced Calibration (non-linear calibration), and caliper tool, OCR, OCV; 2D Matix and Barcode reading
MS300	1280 x 1024	6 x Base model	60	High Resolution & Full Tool Set Pattern, Edge, Blob, Circle, Curve, Histogram, Geometry, Image Filters, Standard Calibration (9-Points) PatMax (Geometric pattern matching technology), Advanced Calibration (non-linear calibration), and caliper tool, OCR, OCV; 2D Matix and Barcode reading